

# Asahi AFP SE/DSE

## The soft flexible plate



The AFP-SE/DSE flexo plate satisfies the severest criteria of quality in printing corrugated board, solid board and heavy-duty bags.

The surface unevenness of the printing material is compensated by the ideal shore hardness and the resilience characteristics of the AFP-SE/DSE plate.

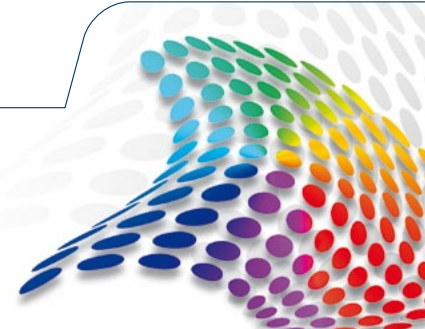
The plate's excellent calibration and its dimensionally stable polyester base sheet compliments the printing quality achievable with the AFP-SE/DSE.

The wide exposure latitude of the AFP-SE/DSE plate ensures that image elements like tones and isolated lines are optimally anchored even with a relief depth of 3mm.

At the same time, intermediate depths form evenly and the relief is produced with steep shoulders.

In platemaking and printing, the AFP-SE/DSE plate can be relied on for:

- soft plate with low durometer
- wide exposure latitude
- optimum intermediate depths
- steep relief shoulders
- short processing times
- excellent ink transfer
- superb ink coverage
- high flexibility
- high mechanical resistance
- optimised plate resilience to minimise the washboard effect
- low dot gain printing



■ **Technical data**

Plate type	AFP – SE 2.84	AFP – SE 3.94	AFP – SE 6,35
Thickness / mm	2.84	3.94	6,35
Hardness / Shore A	39	35	33
K factor	17.05	23.97	39,11
Resolution 120 lpi conventional	3-95%	3-95%	3-95%
Resolution 120 lpi digital	2-95%	2-95%	2-95%
Isolated line / $\mu\text{m}$	150	150	150
Isolated dot / $\mu\text{m}$	200	200	200

The AFP – SE/DSE flexo plates can be produced in all Asahi AFP processing systems or corresponding processing equipment.

The plate is exposed on the back to produce the desired relief depth and achieve maximum sensitivity to UV light. After removal of the protective film, the main exposure is carried out. When an AFP – D(igital)SE type is used, the removal of the protective film is followed by laser imaging with a commonly available YAG, diode or fibre laser.

Then the plate is exposed, dried and finished by UVC and UVA light to ensure the optimum properties of the print-ready plate.

AFP – SE/DSE plates feature excellent compatibility with commonly used solvent- and water-based ink systems.

After printing, the plates should be thoroughly cleaned. Direct exposure to sunlight and heat during storage is to be avoided.

Asahi Photoproducts  
(Europe) n.v./s.a.  
Paepsem Business Park  
Boulevard Paepsem 22  
1070 Brussels/Belgium  
Tel.: 00 32-2-5 26 05 30  
Fax: 00 32-2-5 26 05 45  
[www.asahi-photoproducts.com](http://www.asahi-photoproducts.com)

Asahi Photoproducts (UK) Ltd.  
1 Prospect Way  
Hutton Industrial Estate  
SHENFIELD  
CM 13 1XA  
Tel.: +44-1277-232877  
Fax: +44-1277-224414  
[www.asahi-photoproducts.com](http://www.asahi-photoproducts.com)

This brochure provides information about our products and their applications according to the present state of our technology. It does not guarantee any specific properties or suitabilities of the products for concrete applications. Existing commercial property rights and regulations must be observed. Subject to modification.